

## VERSION COMPARISON: MAPINFO PROFESSIONAL®



Experience a dramatic leap in desktop location intelligence technology with MapInfo Professional v8.5!

### MapInfo Professional 8.5 adds:

MapInfo Professional®, the industry's leading business mapping solution, let's you perform sophisticated and detailed data analysis to drive insightful decisions. In today's business environment, you need to quickly identify where you under-serve your customers... and overspend. There's opportunity you can't see. And waste you can't identify. With the new features in MapInfo Professional v8.5, you have unprecedented access to powerful capabilities. Combined with new and enhanced analysis and visualization tools, version 8.5 is a dramatic leap in desktop location intelligence technology.

#### Platform Support

Windows 2000

Windows XP logo (Professional and Home support)

Support for installation on Windows 2003 Server, Terminal Services and Citrix

Validation on Windows XP 64Bit in 32Bit compatibility mode

Silent install option using Microsoft Windows Installer technology

#### Data access

**WEB SERVICES:** Connectivity to MapInfo Envinsa for Street Level Geocoding (location enablement), Find Address and Drive Region

MapInfo MapMarker connectivity for street level Geocoding and Find Address

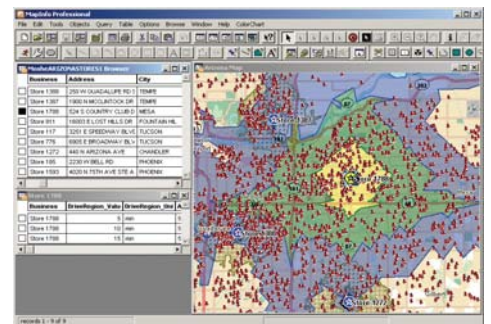
Connectivity option to MapInfo hosted Envinsa Online Services (EOLS) for Geocoding, Find Address and Drive Region generation

Access to other Web Services through MapBasic programmability

New Web Services toolbar added for quick access to capabilities

New interface to configure Web Services preferences include Proxy and HTTPS protocol

**DATA FORMATS:** Support added for the latest AirPhoto USA Raster format, Intermap TIFF image format, ERDAS IMG format



Leverage web services for powerful capabilities such as batch geocoding and generating drivetime polygons.

**DATABASE SUPPORT:** Oracle 10g and 9iR2, MS SQL Server 2000 and SQL Server 2005, MS Access XP, and IBM Informix 9.4

**SPATIAL DATA SUPPORT:** Oracle Spatial 10g and 9iR2, Oracle Locator 10g, SQL Server 2000 with MapInfo SpatialWare v4.8.1, Informix 9.4 with MapInfo SpatialWare 4.5.2

**SAVE WINDOW AS:** Option to save a map window image along with geographic reference information, anti-aliasing for image smoothing options added

#### Mapping/Data Editing

Ability to set default Distance and Area units

Save default thematic with a table

Column and expression persistence added to Browser windows

Automatically view results of query for Select and SQL Select

## MapInfo Professional 8.5 adds: CONTINUED

Ability to re-project and rotate raster and grid images on the fly

Option to smooth raster and grid files to get more info

Enhanced raster image registration dialog—support for cross hair and larger data view

Extended support for Vertical Mapper Grid (GRD) files—support added for 3D visualization

Maximum buffer resolution increased

Enhanced Redistricting capabilities to include percent values based on district totals

### Database Improvements

Use Primary Key for new table creation or when saving a remote copy

Employ Primary Key auto-increment for Oracle databases

MapInfo data uploaded to remote databases is saved with more precision

Refresh DBMS Table button refreshes all forms of ODBC connection type tables

### User Interface Enhancements

Copy and paste from Message and Statistics windows

New Toolbar buttons added for commonly used functions

Status bar expanded to show more coordinates and file names

Dialog boxes enlarged to show more information (Layer Control, Modify Table Structure, New Table Structure, Register raster)

Auto-trace tool enhanced—more visible line when tracing

New right click menu to quickly find selection

### Output and Printing

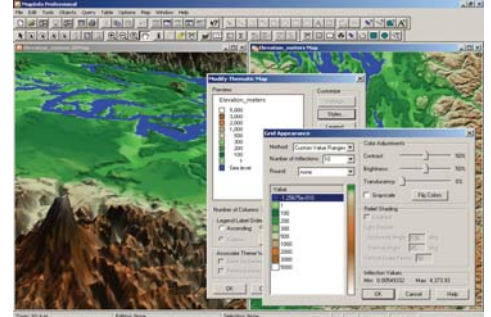
Support for anti-aliasing for labels

Removal of 28,000 pixel limitation (facilitates printing of any size maps)

Extended memory management for large prints

Print to PDF capability added

Tool to Export image or vector data to Google Earth included



Enhanced support for Grid files including 3D visualization.

### Tools

Universal Translator updated

Google Earth utility enhanced and included in Tool Manager

### Datum Enhancements

#### NEW ETRS-BASED COORDINATE SYSTEMS ADDED:

Swedish Coordinate System

South African Coordinate System Zones

Lithuanian Coordinate Systems

Latvian Coordinate Systems

Estonian Coordinate System

### Enhanced Help System

Documentation for the MapInfo Professional Tools

Links to Web content

Customizable favorites

Streamlined navigation

### MapBasic Enhancements:

#### ADDED THE FOLLOWING STATEMENTS:

EPSGToCoordSysString\$( ), Geocode statements, Drive Region statements, ObjectNodeHasM( ), ObjectNodeHasZ( )

ADDED MAPBASIC ACCESSOR FUNCTIONS to HTTP, FTP and XML function calls

ENHANCED THE FOLLOWING STATEMENTS: Create Object statement, Create Redistricter statement, Shade statement, UnitAbbr\$( ) function

## MapInfo Professional 8.0 added:

### Platform Support

Windows XP logo (Professional and Home support)  
Windows 2000, Windows NT+SP6 and Windows 98SE works the same as previous logo Certified versions;  
Support for Windows 2003 Server with Terminal Services and Citrix; Support for silent and unattended installs added.

### Data access

**OGC ENHANCEMENTS:** Proxy Server support for OGC Web Services; Preference Options added for Time out settings for request, refresh WFS based on current window, Import GML 2.1 support added; Display user friendly projection names in WMS WFS dialogs; Smart projection default added for WMS and WFS tables—use current map projection if available; Control image resolution to improve print quality or improve download performance by reducing image resolution; ability to index WFS tables adds search and fast query capability.

**DATA IMPORT:** Import DWG/DXF (Autocad 2004 format), DGN v8 format, display ASRP 1.2 imagery, open ESRI Grid data binary or text formats, Open CSV files directly; Open 3D ESRI Shape files with M&Z values directly.

**DATABASE SUPPORT:** Oracle 10G, Oracle 10G locator, MS SQL Server 2000, MS Access, IBM Informix.

**SPATIAL DATA SUPPORT:** Oracle Spatial & Locator, MS SQL and Informix via SpatialWare®.

**EXPORT WINDOW:** Added more formats to export windows option: GIF, LZW TIFF and TIFFCITT Group 4.

**SAVE WORKSPACE:** Save workspace as (MapInfo Workspace XML Format) MWS now includes label expressions, thematic expressions and query tables.

### Mapping/Data Editing

MapInfo geographic objects can store the following:

The node limit now is: 134 Million nodes per single polyline or polygon object. Multi-polygon object limit is now: 20,648,881 polygons per record. Polyline: theoretical limit for number of segments per polyline is: 24,403,223 per polyline object; Multipoint object limit is 134,217,724 nodes per object.

Oracle Object Map Verification Enhanced To Support Object/Map Validation—Detection of Bowties and figure eights. Option to Convert unsupported Geometries during data upload (save as) to Oracle, Informix, and SQL Server. Improved Performance when Creating Legends from/for a Live Table; Support for Oracle Spatial Workspace Manager including (server side data versioning) (1) Enabling/Disabling Versioning for an Oracle spatial Table (2) Creating/ deleting/ merging/ refreshing and resolving conflicts in Oracle Workspace tables.

Option to Save as MapInfo native to allow Data Editing when Opening the Following Data Files: CSV, XLS and TEXT.

### User Interface Enhancements

File Open Dialog Enhanced—clicking on a MapInfo location also updates the file format filter (WOR/TAB); Option to set per layer object insert styles in the layer list; Layer Control has been enlarged to show more

information. A new layer list preference provides the option to Show More Layer Information using ToolTips. More Room for Longer Statements in SQL Select Dialog Box. From 254 Chrs to 1024 each. In addition, improvements made to usability; Set default find style added to preferences; Find selection in front window only added; New find custom symbols added in custom symbol library.

Mouse Wheel Support for Browser Window

Custom Sort Order for Individual Value Thematic Legends added

Option to create Bi-Variant Layer Using Transparent Patterns

Alignment of Thematic Legends and Legend Frames Added

Choice of Thematic Legend Swatch Sizes Added

Stream Digitizing Added—auto node drop every set pixels; Support for Orthogonal Polygons Added; Sync Window usability Enhancements; Utility to remove and count duplicate rows in a table added; Distance Calculator enhanced Functionality—find straight line distance to highway plus improved Performance with Distance Calculator; Workspace resolver utility added—fix workspaces that do not have the correct file path or have missing tables; New Thematic Templates—provide improved cartographic options for thematic mapping.

### Datum Enhancements

Chinese Coordinate Systems

Guernsey Grid Coordinate System

Hellenic Geodetic Reference System

Baltic Projections (Lithuanian and Latvian)

New Zealand Geodetic Datum 2000

New Belgian Coordinate System

Additional British National Grid Coordinate System

### GPS Support

Geographic Tracker Tool Upgraded—Garmin USB and Serial support added.

### MapBasic Enhancements

Registering .CSV Files; Custom Sort Order Changes (Set Legend).

Converting custom MapInfo Geometries Into valid Geometries for Oracle, IBM Informix, and MS SQL Server; Creating Legends on a Live Table; Draw Orthogonal Polygon Changes; Enable Alignment of Thematic Legends; Enabling Transparent Patterns on Same Layer.

Export Windows to Additional Formats; Find Nearest Functionality commands added.

Increase Choice on Thematic Swatches for Cartographic Legends.

MapBasic Support for the Increase in Nodes, Polygons, and Polyline Allowed—Updated the variable type that stores the node count.



FOR MORE INFORMATION VISIT  
[WWW.MAPINFO.COM.AU/UPGRADE](http://WWW.MAPINFO.COM.AU/UPGRADE)  
OR CALL 1.800.351.576.

#### Corporate Headquarters

One Global View  
Troy, NY 12180-8399  
1.800.327.8627

[www.mapinfo.com](http://www.mapinfo.com)

#### Asia Pacific Headquarters

Level 4, 170 Pacific Highway  
Greenwich NSW 2065  
Australia  
+61.2.9437.6255

[www.mapinfo.com.au](http://www.mapinfo.com.au)

#### EMEA / UK Headquarters

Minton Place  
Victoria Street, Windsor  
Berkshire, SL4 1EG UK  
+44.1753.848.200

[www.mapinfo.co.uk](http://www.mapinfo.co.uk)

  
Be Location Intelligent™

## MapInfo Professional 7.8 added:

### Platform Support

Microsoft Windows Logo Certified for Windows XP (Professional & Home), Windows 2000, Windows NT+SP6 & Windows 98SE.

### Interoperability

OGC FEATURES: WMS Client, GetFeatureInfo; WFS 1.0.

### Remote Database Support

X,Y (POINT DATA): MS Access, SQL Server, Oracle, IBM Informix.

SPATIAL (MAP OBJECTS): Oracle 10G, 9iR2, 8i and Locator, IBM Informix 9.4 and MS SQL Server 2000 with MapInfo Spatial Ware.

IMAGERY AND RASTER: MrSid G3, AirPhoto USA

MAPXTREME 2004 SUPPORT: Save Workspace as to MWS (XML format).

### Mapping

Text Objects 2048 char; split line at a point; snap and thin values saved with TAB; Continues trace mode during digitizing; easy add custom symbols UI, more custom symbols added, bundled line style editor utility with the CD: New projections added RGF, plus coord-sys for Sweden, Denmark, Australia and Israel.

### Data Analysis

Dot density thematic using square or circle shapes of any size; query tables in 3D Prism maps; Distance calculator: find the longest/shortest distance (straight line) between records in two tables; Spider-Graph tool-draw lines from point objects in one table to point objects of another table based on a common field; Sync Map windows to simultaneously zoom and/or pan in two or more map windows.

### Sharing Results

Preference for cartographic scale support: use ratio i.e. 1:50 as well as 1" = 4mi; Specify field type during MS Excel open.

### MapInfo ProViewer

View MapInfo Workspaces free.

### New and Enhanced MapBasic

NEW: MGRStoPoint() and PointToMGRS\$ (); Poliline Split at a point; WFS Refresh Table statement— Programmatically refresh a WFS table.

ENHANCED: Cartographic Legend statement—create or set small or large swatch sizes; Export to CSV format; LegendInfo() function now returns legend size (Small and Large); Register Table statement now has type WFS; Shade statement supports dot density of square/circle with any point size; TableInfo() function includes type WFS.

## MapInfo Professional 7.5 added:

### Platform Support

Certification for Windows XP Professional, XP Home. Compatible with Windows 2000, Windows NT+SP6, Windows 98SE

### Remote Database Support

X,Y (POINT DATA): MS Access, SQL Server, Oracle, Informix; Spatial (Map Objects) : Oracle 8i and 9i, Informix, SQL Server 2000 with SPW; Automatic reading of Oracle Meta-Data for Make Table

RASTER AND VECTOR: Enhanced quick geo-referencing of raster images; interactive Vector file geo-referencing; MS Excel - view any number of rows.

OGC: WMS Client; Enhanced OSGB GML v2 file import with object style specification.

MAP DISPLAY: 100 new fill patterns. Custom symbols support high color and size. Improved auto scroll and smooth panning, hi-res 3D window; Continues visible snap area, snap to centroids, optional cross hair mode, KKJ and JGD 2000 projection support.

UI ENHANCEMENTS: 15 new menu shortcuts, keyboard support for panning and zooming, New options for Create Points.

DATA EDITING: Move and offset support by fixed distance, new rotate selection: option to set an anchor point and degrees for rotation. New table buffer and voronoi into new table. New trim/extend utility, new undo supports large undo operations.

### Data Publishing and Output

SET MAP SCALE: Set Map Scale of a Map Window frame sets the scale of a map within the window; Scale Patterns – New scale patterns scales fill patterns on hi resolution printers

WORKSPACE PACKAGER: Utility to package workspaces with all related tab files into one directory

### MapBasic

New and enhanced MapBasic statements to support the new MapInfo Professional features. MapBasic v7.5 now includes new sample code for HTML Image map, Mapping Wizard and other utilities that demonstrate product programmability.