

THE MAPINFO® ACCESS PROGRAM

SOLUTIONS FOR LOCAL GOVERNMENT



MAP Value

MAP Members benefit from developing business solutions and applications based on the MAP software suite.

Councils need to continue to provide a range of services to meet the current and future needs of their customers. Some of the key services provided and managed by Local Government include regulation, waste disposal, public transport, building approvals and development, local roads and community infrastructure. Below are examples of five key areas within Council where substantial benefits have been achieved by MAP members.

• **Corporate Services**

Call Centres
Automated mail merging of rates and notices

• **Environment and Health**

Environmental Planning
Public Access to Council facilities information via the web
Parkland Management
Field data capture of exotic weeds and pest areas

• **Engineering Services**

Asset Management
Emergency Services
Contractor Management
Planning and construction

• **Planning and Strategic Development**

Building inspections and application approvals
Boundary Management
Town Planning

• **Rates and Valuations**

Links to rating systems
Land Evaluation
Land Zoning
Demographic Analysis

MapInfo Australia has been providing a range of spatial and location-based solutions to the Local Government sector for over 10 years. In fact our Local Government customer base consists of over 300 Councils, which makes MapInfo one of the largest suppliers of spatial and location solutions to the Local Government sector.

Whilst part of a global company, MapInfo Australia has both a national and local focus ensuring a clear strategic direction, ongoing stability, strength and importantly commitment to the Local Government sector. MapInfo understands the Local Government market and is committed to continuing to develop and provide solutions such as the MapInfo Access Program to assist Councils to meet their business needs both now and in the future.

Introducing the MapInfo Access Program (MAP)

The MapInfo Access Program (MAP) is an initiative that provides both small and large Councils alike with an affordable and flexible way to gain access to a range of MapInfo software and services.

Through a corporate licencing model, MAP members have access to 4 key MapInfo software products and technical support services. This empowers Councils to effectively develop spatial and location based solutions and applications to assist with the overall management of key areas such as: Corporate and Engineering Services, Planning and Development, and Rates and Valuations.

MAP Inclusions

- Unlimited internal users of the software
- Selected MapInfo technologies across all platforms
- An affordable annual pricing model
- Licence upgrades
- Period of free technical support on MapInfo Professional software

What are the benefits of being a MAP Member?

The introduction of the MapInfo Access Program has arguably set the standard in technology and business innovation for the Local Government sector - focusing on the consolidation of key

technologies to provide Councils with a solution that is both affordable, adaptable, accessible and from a technology standpoint - future proof.

- **Lower total cost of ownership** due to a reduction in overheads, freedom of licencing issues as well as administrative and software costs.
- **Affordability** through a licencing structure that is based on the size of a Council's rateable properties/parcels.
- **Systems integration** supporting links to other core Council systems such as major rating, asset management and document management systems.
- **Future Proofing of technology** - as a MAP member, you will be entitled to new Local Government products as they are developed by MapInfo. You avoid the risk of being caught with outdated technology.
- **Improved decision making and information sharing** through the ability to effectively disseminate, distribute and share information.
- **Scalability** ranging from a single user to enterprise solution on one platform.
- **Access to an additional support network** provided by MapInfo's Business Partners ensuring that rural and city based Councils receive high levels of service.
- **The MAP Reference Pack** provides a range of information as well as a Membership Certificate.



For more information:

Australian Head Office

Level 4
170 Pacific Highway
Greenwich NSW 2065

Main: +61 2 9437 6255
Fax: +61 2 9439 1773
Free call: 1800 351 576

E-mail: australia@mapinfo.com
Website: www.mapinfo.com.au

Singapore Representative Office

Level 30
Six Battery Road
Singapore 049909

Main: +65 6322 0857
Fax: +65 6322 0808

E-mail: sea@mapinfo.com
or: singapore@mapinfo.com
Website: www.mapinfo.co.sg

Americas Office

One Global View
Troy, New York 12180-8399 USA

Main: +1 518 285 6000
Fax: +1 518 285 6060

E-mail: sales@mapinfo.com
Website: www.mapinfo.com

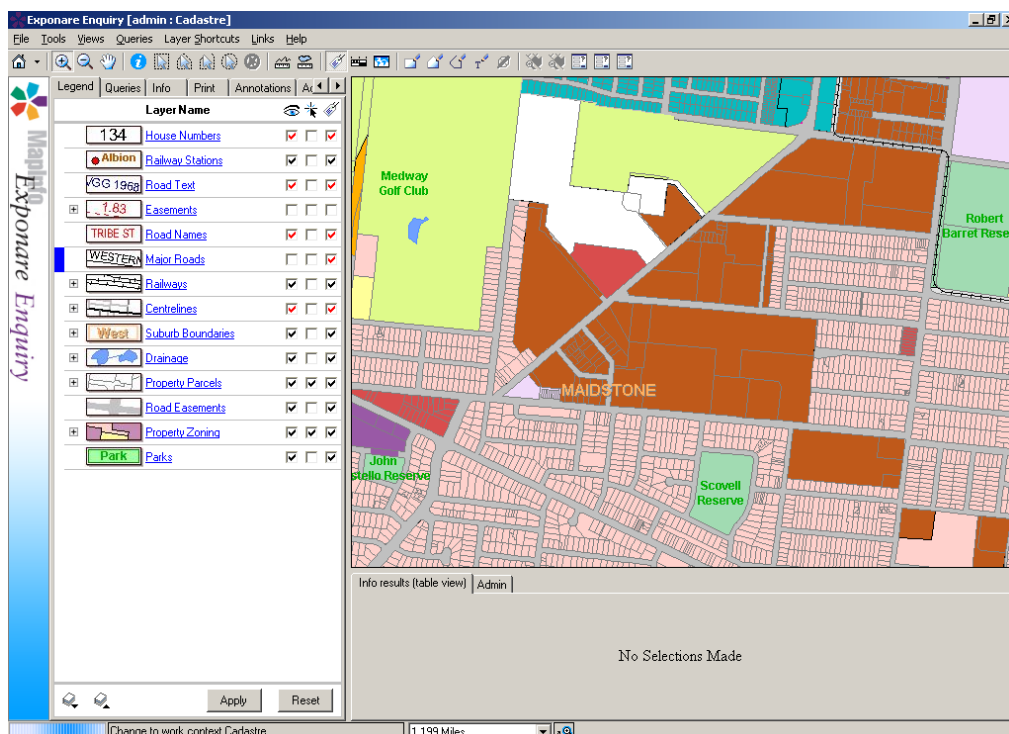
European Office

Minton Place, Victoria Street
Windsor, Berkshire SL4 1EG, UK

Main: +44 1753 848 200
Fax: +44 1753 621 140

E-mail: europe@mapinfo.com
Website: www.mapinfo.co.uk

Or contact your authorised
MapInfo Business Partner



MapInfo Exponare Enquiry, part of the standard MAP pack.

MapInfo Access Program Offerings

What licences, services and support are included as part of the MapInfo Access Program Membership?

1 Software

The MapInfo products most commonly used by Local Governments are included in the standard MAP pack, including:

- MapInfo's recently launched Exponare modules,
- MapInfo Professional,
- MapX Mobile, and
- MapShop.

Additional products are available to Members at a significantly discounted rate, including:

- Vertical Mapper
- MapBasic
- MapXtreme Java
- MapXtreme 2004
- SpatialWare for SQL

2 Support Services

Members are entitled to ten technical support calls. Specially discounted rates for ongoing support and training are also available.

MapInfo and its authorised Business Partners also offer as an additional cost a range of Quick Start Programs which can be tailored for each Member.

3 Marketing Support

MAP reference Kit - each new member receives a reference kit that provides a range of useful information. A Membership certificate is also included.

MAP Newsletter - a quarterly newsletter keeps members up to date with MapInfo news as well as user stories and other related information.

The Marketing support will continue to grow - look out for the new bulletin board service that will be available via MapInfo's website soon.

4 Additional products and services are available to MAP members for a specially discounted rate
Please speak to your MapInfo Account Manager or one of MapInfo's authorised Business Partners.

For More Information

If you would like additional information regarding the MapInfo Access Program, please contact your MapInfo Account Manager, MapInfo authorised Business Partner, or MapInfo customer service in Australia on 1800 351 576.